

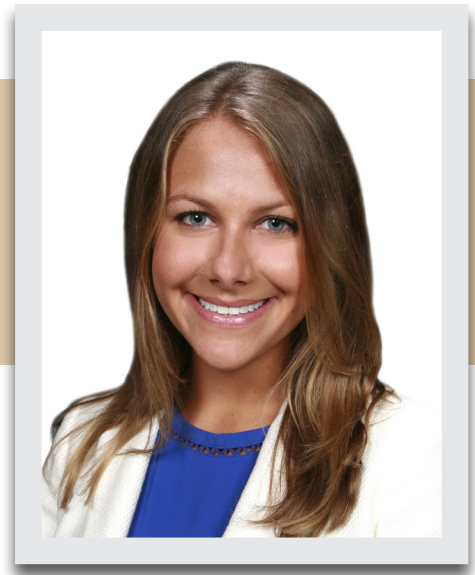
Lil Edwards

Staff Auditor

lil.edwards@saltmarshcpa.com

www.saltmarshcpa.com

www.thecreditunionadvisors.com



Lil is a staff auditor in the Audit & Assurance Services Department of Saltmarsh, Cleaveland & Gund. She is also a part of the firm's Financial Institution Advisory Group where she provides auditing and related assurance services to the firm's financial institution clients. Prior to joining Saltmarsh, she worked as an auditor for a Fortune 100 company where she performed substantive and analytical testing on client's internal controls as well as reviews of financial statements.

Education

Masters of Accountancy - University of Alabama

B.S.B.A. Accounting - University of Alabama

Certifications

Certified Public Accountant - Alabama